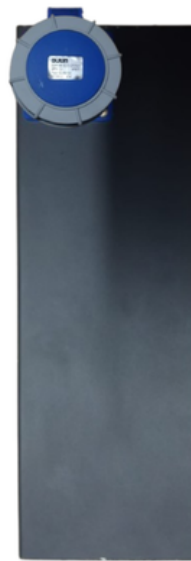


Brand: Lightbreeze

Model: LB-32-H-D-12-B-C310-C92-R

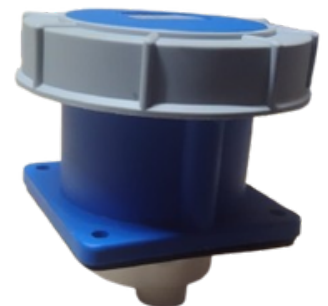
Product Overview

The LightBreeze LB-32-H-D-12-B-C310-C92-R is a professional-grade rack-mounted Power Distribution Unit (PDU) engineered for reliable power distribution in data centers, server rooms, network cabinets, and telecom environments. Designed with a robust double-section architecture, this horizontal PDU provides efficient power management through a combination of IEC C13 and IEC C19 outlets while ensuring maximum electrical safety with integrated RCBO protection.



Key Features

- Horizontal rack-mount design for standard 19-inch cabinets.
- Double-section construction for organized power distribution.
- 10 IEC C13 outlets for servers, switches, routers, and networking devices.
- 2 IEC C19 outlets for high-power equipment.
- High-capacity 32A power distribution.
- Rear-mounted industrial socket input connection.
- Rugged metal enclosure for long-term durability.
- Suitable for mission-critical IT and telecom infrastructure.
- Compact design for efficient rack space utilization.



Technical Specification

Parameter	Specification
Brand	LightBreeze
Model	LB-32-H-D-12-B-C310-C92-R
Rated Current	32A (RC)
Mounting Type	Horizontal
Feature Type	Basic
Output Ways	12
Section Type	Double Section
Output Configuration	10 × IEC C13, 2 × IEC C19
Protection	RCBO Protected
Input Connection	Rear-Mounted Industrial Socket
Housing Material	Powder-Coated Metal Enclosure
Installation Environment	19" Server & Network Racks



Safety Features

The LightBreeze LB-32-H-D-12-B-C310-C92-R is equipped with an integrated RCBO (Residual Current Breaker with Overcurrent Protection) that provides comprehensive protection against overloads, short circuits, and earth leakage faults. This advanced protection mechanism helps safeguard both connected equipment and personnel by automatically disconnecting power during electrical abnormalities. The rear-mounted industrial input socket ensures a secure and reliable power connection, reducing the risk of accidental disconnection. Its robust metal enclosure offers excellent mechanical strength and durability, making it suitable for continuous operation in demanding IT and industrial environments.

Applications

The LightBreeze LB-32-H-D-12-B-C310-C92-R is designed for use in data centers, server rooms, network cabinets, telecommunications infrastructure, and enterprise IT environments where reliable power distribution is critical. Its combination of IEC C13 and IEC C19 outlets allows it to support a wide range of equipment, including servers, switches, routers, storage devices, UPS systems, and other rack-mounted hardware. The horizontal rack-mount design and double-section configuration make it an ideal solution for organized and efficient power management in professional installations.

