

**Brand: Lightbreeze**

**Model: LB-13-V-S-08-B-5U-C33-F**

### Product Overview

The LightBreeze LB-13-V-S-08-B-5U-C33-F is a high-quality vertical Power Distribution Unit (PDU) engineered to provide safe, reliable, and efficient power distribution for IT, networking, telecommunications, and industrial applications. Designed with a robust metal enclosure and equipped with a combination of universal and IEC C13 outlets, this PDU offers flexible connectivity for a wide range of equipment. Featuring integrated fuse protection, a heavy-duty power switch, and a 2-meter 2.5 RM power cable, it ensures dependable operation while protecting connected devices from overload conditions. Its space-saving vertical design makes it an ideal solution for server racks, network cabinets, and professional power management environments.

### Key Features

- 16A rated power distribution capability
- Vertical rack-mount design for efficient space utilization
- 8 output outlets (5 Universal + 3 IEC C13)
- Integrated fuse protection against overload conditions
- Heavy-duty illuminated power switch
- Single-section distribution architecture
- 2.5 RM heavy-duty copper cable
- 2-meter extended power cord for flexible installation
- Durable metal chassis construction
- Suitable for IT, networking, telecom, and industrial environments



## Technical Specifications

Parameter	Specification
Brand	LightBreeze
Model	LB-13-V-S-08-B-5U-C33-F
Product Type	Power Distribution Unit (PDU)
Rated Current (RC)	16 Amp
Mounting Type	Vertical
Feature Type	Basic
Output Ways	8 Outlets
Section Type	Single Section
Socket Configuration	5 × Universal Sockets, 3 × IEC C13 Sockets
Protection	Fuse Protected (Overload Protection)
Power Switch	Yes
Cable Specification	2.5 RM Copper Cable
Cable Length	2 Meters
Body Material	aluminium
Body color	Industrial Black

## Application

- Data Center Racks
- Server Cabinets
- Network Switches & Routers
- Telecom Equipment
- CCTV Systems
- Industrial Control Panels
- Office Power Distribution


**MODEL LB-13-V-S-08-B-5U-C33-F-1**

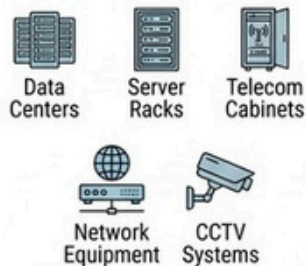
### Technical Configuration

Output Type	Quantity
Universal Socket	5
IEC C13 Socket	3
<b>Total Outputs</b>	<b>8</b>

### Key Features

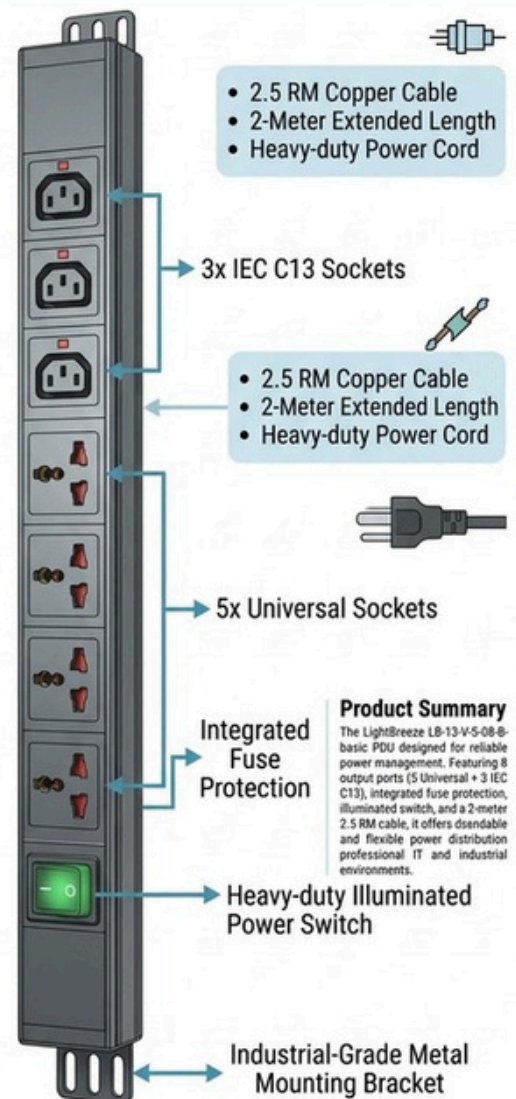
- 16A Power Distribution
- Vertical Rack-mount Design
- Mixed Socket Configuration (5U + 3C13)
- Integrated Overload Fuse Protection
- Single-section Architecture

### Applications



### Advantages

- ✓ Reliable Power Distribution
- ✓ Overload Protection
- ✓ Space-saving Vertical Installation
- ✓ Robust Metal Construction



#### Product Summary

The LightBreeze LB-13-V-S-08-B-basic PDU designed for reliable power management. Featuring 8 output ports (5 Universal + 3 IEC C13), integrated fuse protection, illuminated switch, and a 2-meter 2.5 RM cable, it offers dependable and flexible power distribution professional IT and industrial environments.

## PRODUCT DIAGRAM: LightBreeze LB-13-V-S-08-B-5U-C33-F Vertical PDU

